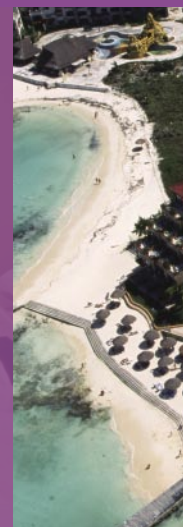
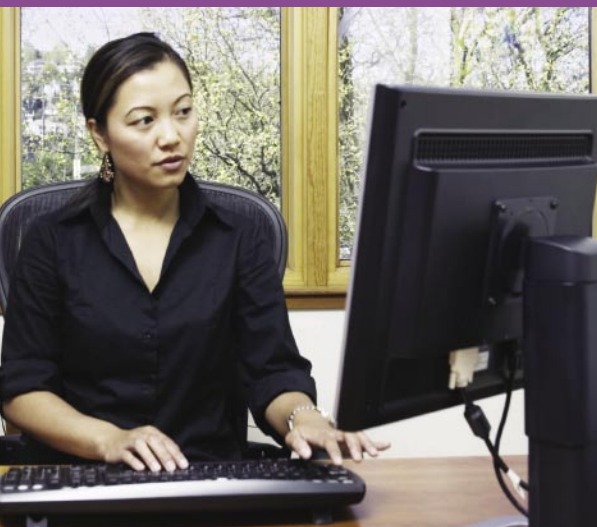


Never miss a grand opening.





For hotel and casino owners, grand openings cannot come soon enough. Your latest concept will finally become a reality. But before you confirm your first reservation—or plug in the slot machines—you and your team must manage and monitor the flow of information across your project to ensure on-time delivery.

Although design changes are inevitable during construction, your aggressive deadlines stand firm. No matter how many architects, consultants, contractors, property managers, and accountants are involved in a project—or where they are located—you must give them access to accurate and timely information to ensure the doors open on time.

Autodesk® Buzzsaw® collaborative project management helps you manage design, construction, and capital projects more efficiently. Buzzsaw speeds the flow of information to keep your extended project team informed and on track. As a result, your projects move more quickly from design concepts to sold-out suites.

Design Without Delays

Once your company approves the development plans for new properties, the race begins. You must find, purchase, and prepare the right parcels of land; manage the development of multiple locations simultaneously; meet local regulations; and coordinate efforts among architects, consultants, decision makers, and builders who may be scattered across the country—or around the world.

Autodesk Buzzsaw is a central repository for documents related to finding, bidding on, and purchasing parcels of land. Your real estate team avoids the delays of misplaced documents and paper-based approval processes. During the design phase, architects, consultants, and project managers collaborate online to streamline the flow of project

“Our use of Buzzsaw on the Wynn Macau project has been probably even more invaluable than on the Wynn Las Vegas project, since we were using design professionals in Europe, Asia, and the United States... Without this tool, it would be almost impossible for everybody to stay on the same page.”

—Todd Nisbet, Wynn Design and Development



information. When the architect posts new or revised plans, consultants and contractors receive automatic notification. They can then view the changes, make comments, or redline drawings in Buzzsaw—all while maintaining version control.

With Autodesk Buzzsaw, project teams can

- Reduce the expense of printing and shipping drawing sets
- Take advantage of the expertise of hospitality consultants regardless of their location
- View, manage, share, and mark up designs—and track changes
- Notify key decision makers of changes and project milestones

Autodesk Buzzsaw helps your internal design team identify, address, and resolve design issues quickly and collaboratively. Because team members share and approve information online, rather than by overnight courier, they can adopt and meet more aggressive schedules that reduce the time to benefit. And each time your internal design review process repeats, version control helps eliminate costly miscommunication.

Manage Change During Construction—and Beyond

Building a new hotel on a compressed timeline is challenging enough. But when unforeseen conditions appear or changes occur during construction, timing becomes even more crucial. If contractors continue working with outdated or inaccurate information, they may waste materials and time—or even threaten the safety and integrity of your buildings. If they wait for new designs to be sent by courier, progress may stall for days.

Autodesk Buzzsaw serves as an online hub for communicating information between architects and contractors. It instantly notifies general contractors and subcontractors of design or construction changes—reducing errors and delays and minimizing the need to redo work. Buzzsaw also makes it easy to share new information with city officials, industry consultants, and your marketing department, giving each group access to the most relevant documents.

Once your hotels and casinos are open, Autodesk Buzzsaw continues to increase your efficiency by enabling you to share facilities information online. Your staff and vendors access as-builts, manuals, and

“Buzzsaw is incredibly cost-effective—the return on investment is sizable after a couple of years of use.”

—Richard Senechal, AIA
Senior Vice President of Design and Construction
Wyndham International

“To stay on schedule, we needed to make sure that all the different stakeholders—from the design group, to the general contractor and various outside consultants—had access to the latest project information at every stage of the process. Outdated information means delays—and speed is of the essence for construction projects, particularly in a town like Vegas, where nearly every job is a ‘fast track’ project.”

“The Red Rock project is a pretty big undertaking,”

—Michael Rice, Station Casinos

warranty documents in seconds. Automated alerts and reminders help keep all facilities-related projects on track and on schedule. With accurate facilities information at your fingertips, you can provide a safe and healthy environment for your guests and maximize the profitability of your buildings.

Streamline Capital Projects

Every year, you evaluate your portfolio of properties and make investment decisions. Would your new casino be even more profitable if you added another restaurant? Could one of your older hotels benefit from new paint and carpeting? Before these projects are funded or launched, multiple decision makers must evaluate information. Then, you must work efficiently to minimize the disruption to guests during construction.

Autodesk Buzzsaw helps internal and external teams exchange information smoothly for faster, more efficient capital planning decisions and execution. With Buzzsaw, project teams can view virtually any file type to gain information about schedules, budgets, and specifications. The corporate office gains insight to manage capital spending centrally and can monitor the progress of these projects across the entire portfolio of properties.

With Autodesk Buzzsaw, hotel and casino owners can

- Complete the annual capital planning process in days—not weeks
- Track and monitor capital projects across all properties
- Implement standards and execute the brand more effectively
- Track assets across the organization

As you complete any major construction project, you want to avoid disputes and litigation. Autodesk Buzzsaw brings together entire project histories in a single, auditable location. It tracks documents to determine which team members received what information and when, improving accountability and reducing delays and errors. More important, Buzzsaw helps your extended team prevent these problems.

For More Information

Autodesk Buzzsaw pays for itself if it helps you open even one highly profitable facility on time. To learn more about how Autodesk Buzzsaw can help you coordinate information and streamline decision making to manage your projects simply, securely, and profitably, call 866-815-3501 (415-356-0700 outside the United States), send email to buzzsaw.sales@autodesk.com, or visit www.autodesk.com/buzzsaw.