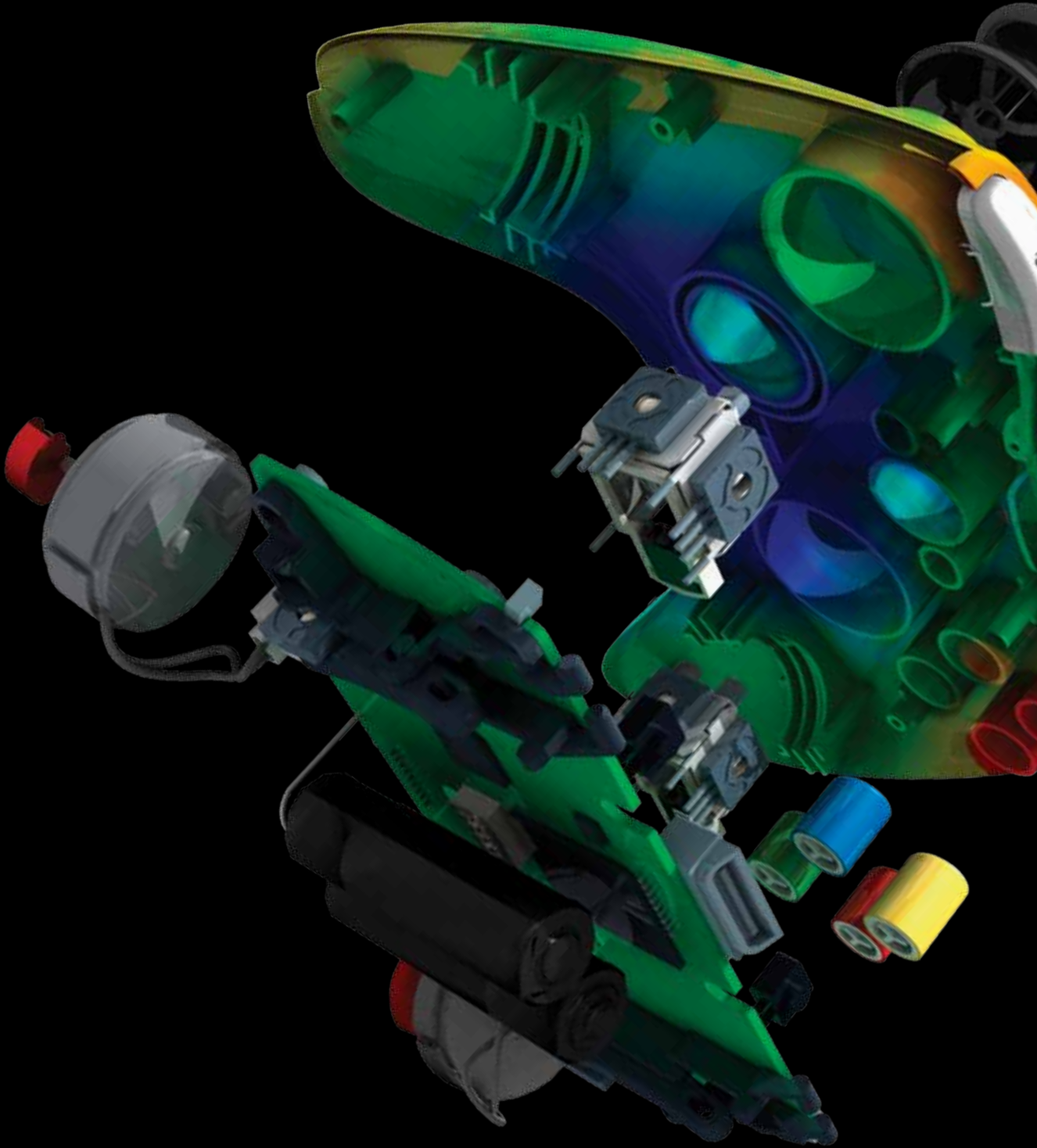


Technical What's New

www.rand.com/imaginix/moldflow

Autodesk®
Moldflow® Adviser



Autodesk

Technical What's New

Contents

Enhanced Interoperability	3
Inventor Support in Autodesk Moldflow Adviser.....	3
Autodesk Moldflow Insight Surface Model Import.....	3
Sustainable Design Features	3
Environmental Impact	3
3D Analysis Speed and Performance Improvements	3
Advanced Gate Location Functionality ..	3
Dual Domain Fill+Pack Solver Optimization	4
Reduced Memory Requirements	4
Faster Solution Times	4
Automated Customer Feedback	4
Customer Involvement Program.....	4
Customer Error Reporting	4
Stay Up to Date.....	4
Subscription	4
Feedback	4
Conclusion.....	4

Autodesk® Moldflow® Adviser software, part of the Autodesk® solution for Digital Prototyping, provides easy-to-use tools that help you to simulate and optimize your plastics part and injection mold designs long before manufacturing begins. By simulating the injection molding process using a digital prototype, you can help reduce the number of physical prototypes required to perfect a design and get your products to market faster. The second release of Autodesk Moldflow Adviser 2010 offers the following new features and benefits:

- Enhanced Interoperability
- Sustainable Design Features
- 3D Analysis Speed and Performance Improvements
- Advanced Gate Location Functionality
- Dual Domain Fill+Pack Solver Optimization
- Automated Customer Feedback

Enhanced Interoperability

Inventor Support in Autodesk Moldflow Adviser

Models created in Autodesk Inventor with an *.ipt file extension can now be directly imported into Autodesk Moldflow Adviser. This tighter interface with Inventor better aligns Moldflow Adviser with the Digital Prototyping workflow, helping to further minimize the need for costly physical prototypes and help get more innovative designs to market faster.

Autodesk Moldflow Insight Surface Model Import

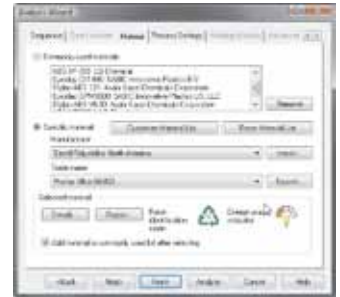
Autodesk Moldflow Insight surface models can now be directly imported to Autodesk Moldflow Adviser. This functionality allows Moldflow Adviser users that have access to Moldflow Insight to take advantage of the full range of model editing tools available in Insight.



Sustainable Design Features

Environmental Impact

The new Energy Usage Indicator in Autodesk Moldflow Adviser provides an indication of the relative energy requirements to produce a part from a given material based on injection pressure, cooling time, geometry and part thickness. Armed with this knowledge, designers can further decrease manufacturing energy requirements to reduce costs and minimize environmental impact.



Resin Identification Codes are now also included with all thermoplastics in the Autodesk Moldflow material database. Having access to these codes allows designers to select materials that are more easily recycled and that contribute to sustainability initiatives.

3D Analysis Speed and Performance Improvements

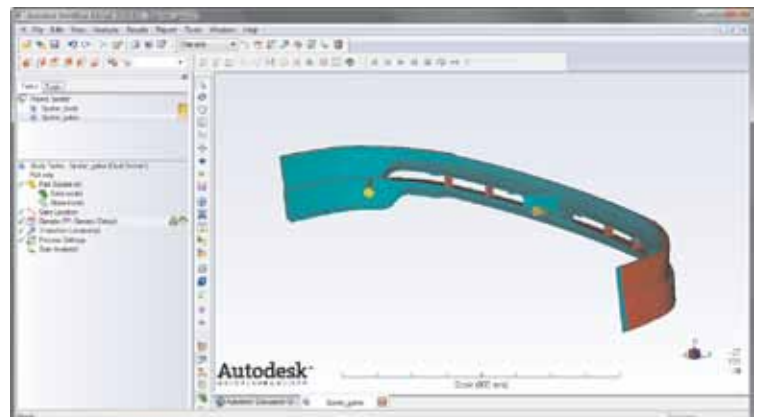
Significant enhancements have been made to the 3D Fill+Pack solver so users can get accurate results faster. The speed improvement is achieved through the new Autodesk-developed AMG (Algebraic Multi Grid) matrix solver, which is faster and uses less RAM than the previous solver. It is available on all supported Windows platforms, for both 32-bit and 64-bit systems.

Advanced Gate Location Functionality

Autodesk Moldflow Adviser 2010 has a new Advanced Gate Locator algorithm with two key breakthrough capabilities:

- The ability to simultaneously search for and recommend up to 10 gate locations.
- The ability to exclude specific regions of the part geometry from being included in the gate location considerations.

The Advanced Gate Locator has been designed to identify gate locations that will result in minimizing injection pressure requirements.



Technical What's New

Dual Domain Fill+Pack Solver Optimization

Fill and Pack analyses benefit from code optimization that has been implemented in the latest release of Moldflow Adviser 2010 as follows:

Reduced Memory Requirements

Internal tests show that a typical analysis using an unfilled material and default process settings now requires significantly less memory, thereby using system resources more efficiently.

Faster Solution Times

Internal tests also show that a typical analysis using an unfilled material and default process settings runs about 5% faster than the same analysis as compared to the existing solver.

Automated Customer Feedback Customer Involvement Program

Autodesk now invites Moldflow Adviser 2010 customers to join the Customer Involvement Program. With your participation in this program, information about your system and the ways in which you navigate the program will be collected and sent to Autodesk. This information helps us identify trends and usage patterns that we can use to improve your experience with our products. You can choose to participate at any time, and, your participation can be anonymous. If you choose to provide us with your contact information, with your permission we may occasionally contact you to discuss the discovered trends.



Customer Error Reporting

Autodesk is committed to making quality products and this commitment does not stop when the product is shipped. The new customer error reporting feature in Moldflow Adviser 2010 provides customers with a mechanism to report to our developers if the program closes unexpectedly. Details about the type of failure and the state of the software when the failure occurred are sent to Autodesk automatically. Your step-by-step description, and the command history preceding the failure provides us with the missing link between the conditions that caused the failure and the point of failure itself. This information is then used to identify and resolve program problems.

Stay Up to Date

Autodesk gives you more. Gain access to technical expertise, utilize training and support programs direct from Autodesk, stay up to date with the latest product releases, and give us your feedback. Not only does Autodesk want to help you use Moldflow Adviser more effectively—we want to make sure that Moldflow Adviser is working effectively for you.

Subscription

Log into the Subscription Center to receive product updates, log and view support requests, or take eLearning courses. A valuable component of Autodesk® Subscription, eLearning provides a continually expanding curriculum of short training exercises.

Feedback

Autodesk Moldflow Adviser customers can provide feedback to the Moldflow Adviser development team through several avenues:

- Submit feedback, share best practices and collaborate with other users through discussion groups at **www.autodesk.com/discussiongroup-moldflow-all**.
- Keep up to date on what's happening in your industry, stay in touch with other industry professionals, and take advantage of a host of online resources at the Autodesk Manufacturing Community Portal, at **mfgcommunity.autodesk.com**.
- Talk with your Autodesk Moldflow Direct Sales Manager or Authorized Reseller, and support staff. Your input is crucial to our success, and we look forward to receiving your suggestions.

Conclusion

We thank you for your continued support of Autodesk Moldflow Adviser and hope you feel we are listening to your needs. We developed the new and enhanced functionality in Moldflow Adviser 2010 to help make you more productive, make your company more competitive, and return true value to your bottom line.